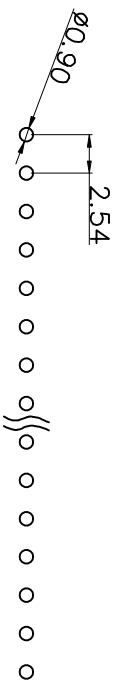
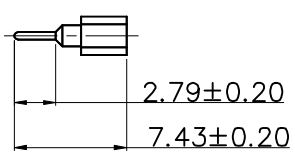
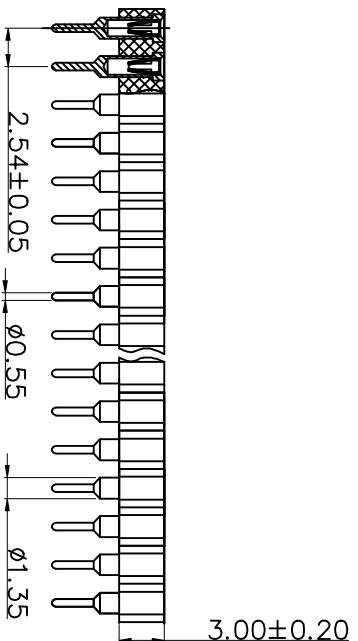
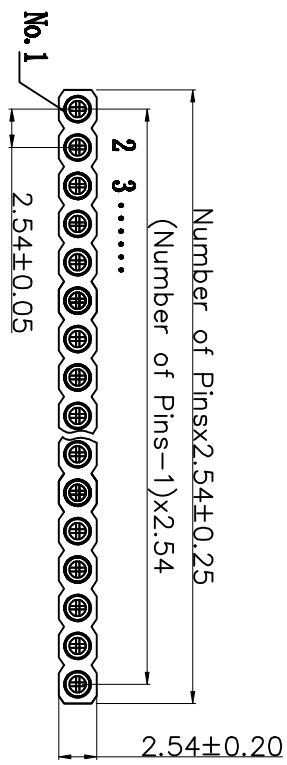


# HSE ROHS

REV	ECN NO	DESCRIPTION	DATE	NAME
A		NEW		

### Technical Specs:

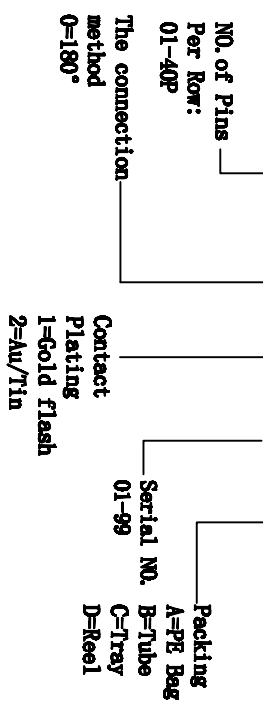
- Insulator: NY6T
- Flammability: UL 94V-0
- Sleeve: Brass
- Contact clip(4/6 finger): Beryllium copper(C17 200)/Phosphor Bronze
- Accepted pin: Ø0.40 to 0.56mm (polished steel gauge Ø0.43mm)
- Forces: 2 N typ
- Insertion 1 N typ
- Withdrawal min500 cycles
- Rated current: 3A
- Contact resistance: max 10m Ω
- Dielectric resistance: Min 1000V RMS
- Max.Processing Temp:230°C for30-60 seconds (260°C for 10 seconds)



PCB LAYOUT

### Ordering Information

L488XX - X X XX X



<b>LDCONN 东莞连大精密制品有限公司</b> Dongguan Lianda Precision Products Co., LTD		TITLE DRAWN BY Lu Junhui		DATE 18.11.05	
STANDARD TOLERANCE (EXCEPT SPECIFIED) LINER ANGLES 0 ±0.30 0.° ±3° .00 ±0.20 .0° ±2° .000 ±0.10 .00° ±1°	PART NO L488XX-0XXXX	CHECKED BY	DRAWING NO	APPROVED BY	SCALE 1:1
UNIT mm	PAGE 1/1	SIZE A4			