

HSE ROHS

REV	ECN NO	DESCRIPTION	DATE	NAME
A		NEW		

Masterials:

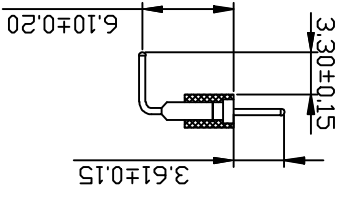
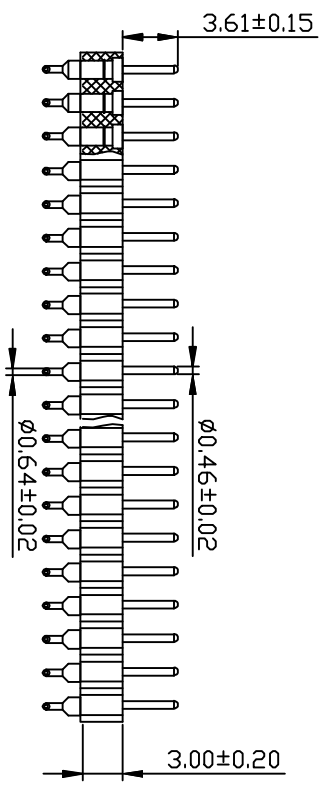
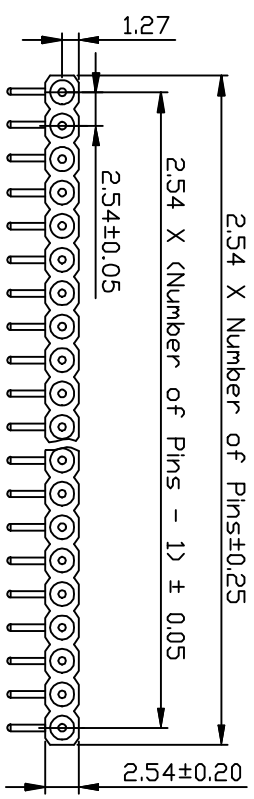
Pin :Brass,mechanical, CUZn38Pb2
 Plating:
 Tin plated :2u"m/80u"nickel/5um/200u"TiH
 Gold plated:2u"m/60u"nickel/full gold
 Insulator body:black/Glass filled polyester Vactor UL94V-0

Electrical:

Current rating:3 Amper/contact max.
 Insulation resistance: >R1000M at V=100V
 Operating voltage:80 AC/DC

Mechanical:

Operating temperature :Gold plated:-65jies to +125jies
 -67H to +257H
 Tin plated:-40jies to +105jies
 Soldering temperature:280 jies, 10s max



Ordering Information

L489XX - X X XX X

NO. of Pins
 Per Row: 01-40P

The connection method
 0-180°
 1-90°
 2-SMT

Contact Plating
 1-Gold Flash
 2-Au/Tin

Serial NO. 01-99

Packing
 A=PE Bag
 B=Tube
 C=Tray
 D=Reel

STANDARD TOLERANCE (EXCEPT SPECIFIED)	LINER	ANGLES
.0 ± 0.30	0.°	± 3°
.00 ± 0.20	.0°	± 2°
.000 ± 0.10	.00°	± 1°

LDCONN 东莞连大精密制品有限公司 Dongguan LianDa Precision Products Co., LTD		TITLE DRAWN BY Lu Junhui		DATE 18.11.12	
PART NO L489X-1XXXX		CHECKED BY			
DRAWING NO		APPROVED BY			
SCALE	1:1	UNIT	mm	PAGE	1/1
				SIZE	A4