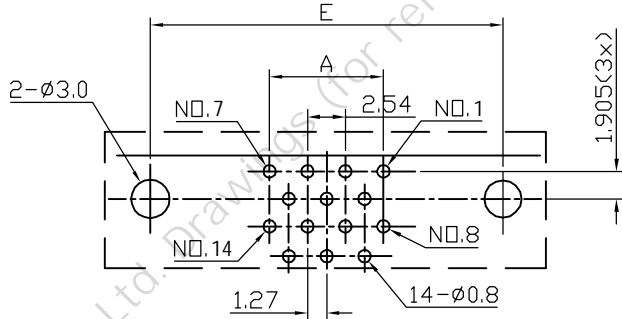


No. of Pin	DIMENSIONS						
	A	B	C	D	E	F	G
14	7.62	9.52	12.6	29.51	23.64	17.25	19.58
20	11.43	13.1	16.43	33.32	27.45	21.06	23.39
26	15.24	17.1	20.24	37.13	31.26	24.76	27.2
36	21.59	23.4	26.5	43.48	37.61	31.11	33.55
50	30.48	32.29	35.39	52.37	46.5	40.0	42.44

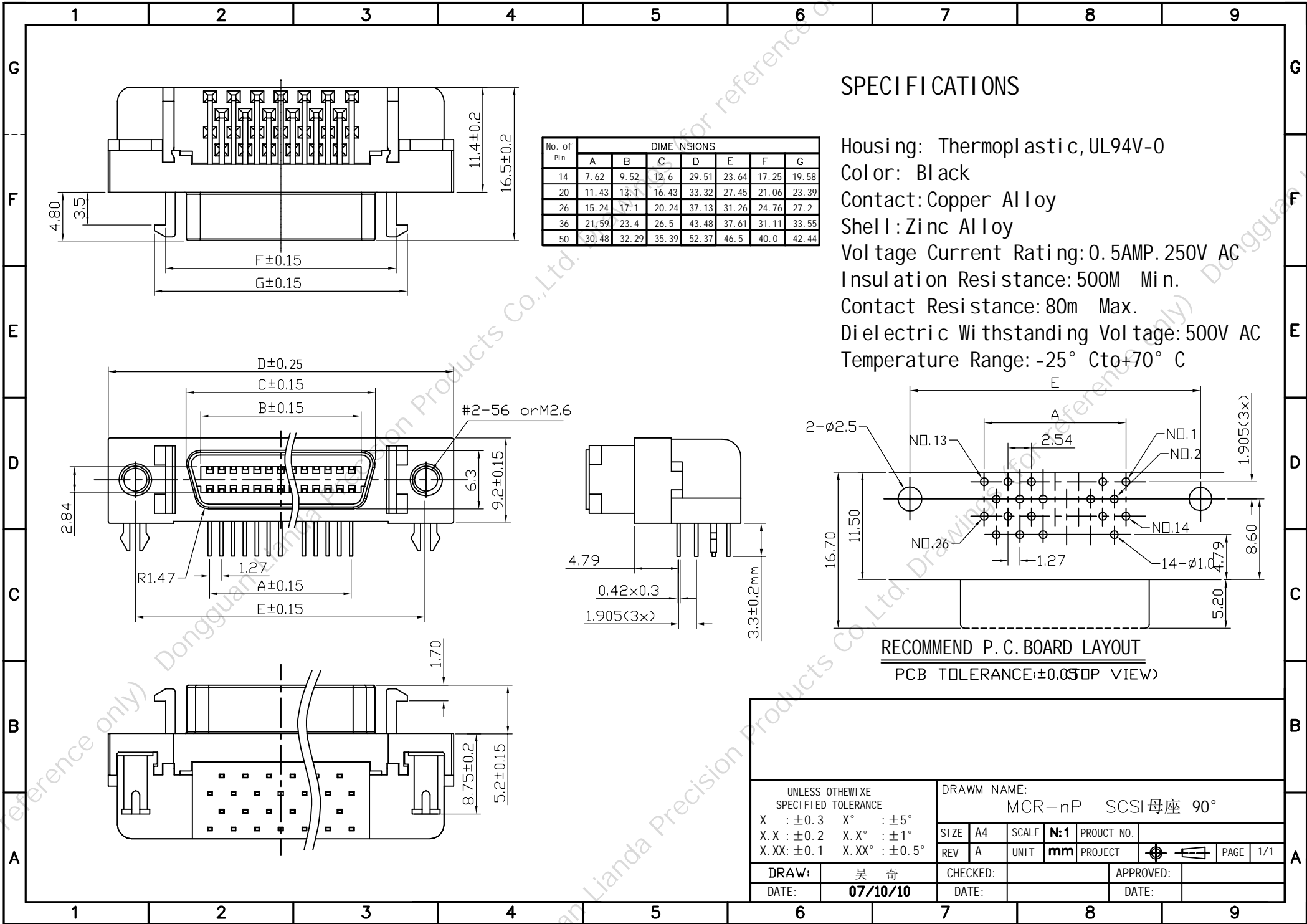
SPECIFICATIONS

Housing: Thermoplastic, UL94V-0
 Color: Black
 Contact: Copper Alloy
 Shell: Zinc Alloy
 Voltage Current Rating: 0.5AMP, 250V AC
 Insulation Resistance: 500M Min.
 Contact Resistance: 80m Max.
 Dielectric Withstanding Voltage: 500V AC
 Temperature Range: -25° C to +70° C



RECOMMEND P. C. BOARD LAYOUT
 PCB TOLERANCE: ±0.05 (TOP VIEW)

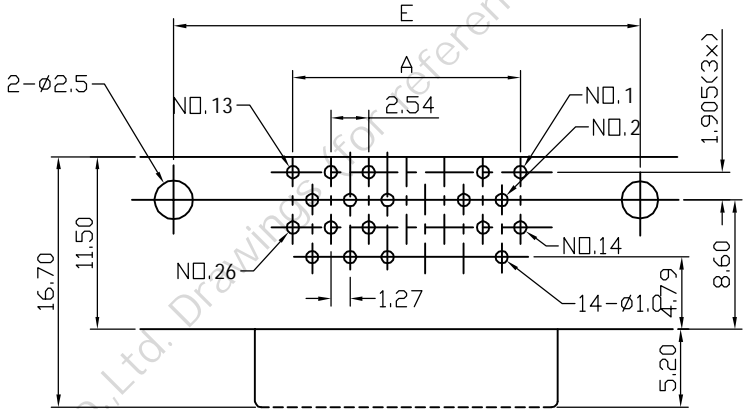
UNLESS OTHERWISE SPECIFIED TOLERANCE		DRAWING NAME:			
X : ±0.3	X° : ±5°	MCR-nP SCSI母座 180°			
X.X : ±0.2	X.X° : ±1°	SIZE	A4	SCALE	N:1
X.XX : ±0.1	X.XX° : ±0.5°	REV	A	UNIT	mm
DRAW: 吴奇		CHECKED:		APPROVED:	
DATE: 07/10/10		DATE:		DATE:	



No. of Pin	DIMENSIONS						
	A	B	C	D	E	F	G
14	7.62	9.52	12.6	29.51	23.64	17.25	19.58
20	11.43	13.1	16.43	33.32	27.45	21.06	23.39
26	15.24	17.1	20.24	37.13	31.26	24.76	27.2
36	21.59	23.4	26.5	43.48	37.61	31.11	33.55
50	30.48	32.29	35.39	52.37	46.5	40.0	42.44

SPECIFICATIONS

Housing: Thermoplastic, UL94V-0
 Color: Black
 Contact: Copper Alloy
 Shell: Zinc Alloy
 Voltage Current Rating: 0.5AMP, 250V AC
 Insulation Resistance: 500M Min.
 Contact Resistance: 80m Max.
 Dielectric Withstanding Voltage: 500V AC
 Temperature Range: -25° C to +70° C



UNLESS OTHERWISE SPECIFIED TOLERANCE		DRAWING NAME:			
X : ±0.3	X° : ±5°	MCR-nP SCSI母座 90°			
X.X : ±0.2	X.X° : ±1°	SIZE	A4	SCALE	N:1
X.XX : ±0.1	X.XX° : ±0.5°	REV	A	UNIT	mm
DRAW: 吴奇		CHECKED:		APPROVED:	
DATE: 07/10/10		DATE:		DATE:	